

# PRICE LIST



OVER 130 YEARS OF INNOVATION

PRICE LIST

V1 | MARCH | 2022

**REZNOR®**  
 **NORTEK**  
GLOBAL HVAC

1

OPTION 1 SALES  
reznorquotes@nortek.com | reznorsales@nortek.com

- Pricing, Orders and Quotes • Technical Designs & Support (pre-sales)
- Spares • Invoice Queries

2

OPTION 2 POST SALES TECHNICAL SUPPORT  
technicalsupport.hvac@nortek.com

- Installation Support • Wiring Advice • Trouble Shooting

3

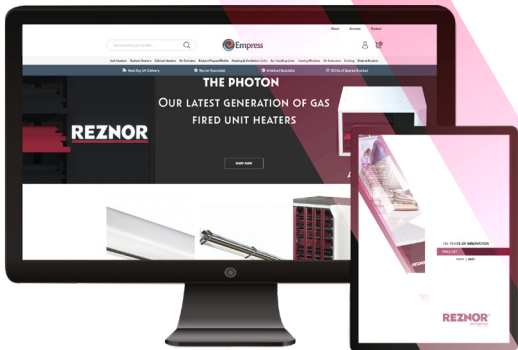
OPTION 3 SERVICE  
serviceuk.hvac@nortek.com

- Report a Breakdown • Warranty Call Outs
- Arrange Commissioning

4

OPTION 4 ACCOUNTS & SUPPLY CHAIN  
hvacuk.creditcontrol@nortek.com

- Credit Limit Advice • Opening a New Account



01384 489 700



WEBSITE & LIBRARY

Did you know Reznor has extensive online resources available for you?

Find the latest updates and product news on [www.reznor.eu](http://www.reznor.eu)

You can now access technical literature and information on spare parts for Reznor, AmbiRad, NordairNiche, Benson and AirBloc units at [literature.reznor.eu](http://literature.reznor.eu)

SPARES - VIEW AND ORDER ONLINE

We have an easy to use online spares platform called **Empress**.

This contains spare parts for all Nortek branded products, past and present, including Reznor, AmbiRad, NordairNiche, Benson and AirBloc . Visit [www.EmpressHVAC.com](http://www.EmpressHVAC.com) to order now.



facebook.com/ReznorHVAC



@ReznorUK



linkedin.com/company/reznor-uk-ltd

AREA SALES MANAGERS

Area	Contact	Telephone	Email
Scotland	Tracey Ashley	07778 604 226	tracey.ashley@nortek.com
North East	Jason Fryer	07789 717 811	jason.fryer@nortek.com
North West	Mark Broadhead	07979 242 785	mark.broadhead@nortek.com
West Midlands	Phil Parsons	07979 242 786	phil.parsons@nortek.com
Eastern	Ansar Mahmood	07890 381 975	ansar.mahmood@nortek.com
South East	Tracey Ashley	07778 604 226	tracey.ashley@nortek.com
South West	Jason Hall	07831 474 428	jason.hall@nortek.com

REZNOR®

Radiant Tube Heaters

VSXO - High Efficiency U Tube Models	Page 05
VSX & VSUTE - U Tube Models	06
VSLIE - Linear Models	07
VSDLE - Double Linear Models	08
Accessories - Vision models	09
BTwin - High Efficiency Linear	12
SCR-ECO - Gas Fired Radiant Plaque	13
Titan - Electric Radiant Heaters	14
Quartzglow - Electric Radiant Heaters	14
Nor-Ray-Vac - Multi Burner Continuous Radiant Tube System	15
Sonning² OHA - Single Burner Continuous Radiant Tube System	17

Warm Air Heaters

RHeco - Gas Fired Condensing Suspended Unit Heaters	18
Photon - Gas Fired Unit Heater	19
Preeva Neos - Heating & Ventilation Unit	20
Sealed Stainless Steel Flue - for Gas Fired Unit Heaters & Preeva Neos	21
DS - Destratification Fans	22
Comet - Cabinet Heaters	24
Echo - Air Rotation Units	26
Genco - Modular Air Handling System	27
AirMix - High Induction Duct Distribution System	28
Smitsair - High Induction Nozzles	29

Air Curtains

Guardian GS - Surface Mounted Series	30
Guardian GR & GB - Recessed & Bulkhead Mounted Series	31
Accessories - for Guardian Series	33
AC Mini Series - Mini Surface Mounted & Recessed Series	34
ACT - Electric Ceiling Tile Heaters	35
AB - Industrial Series	36
Accessories - for AB Industrial Series	37

Miscellaneous

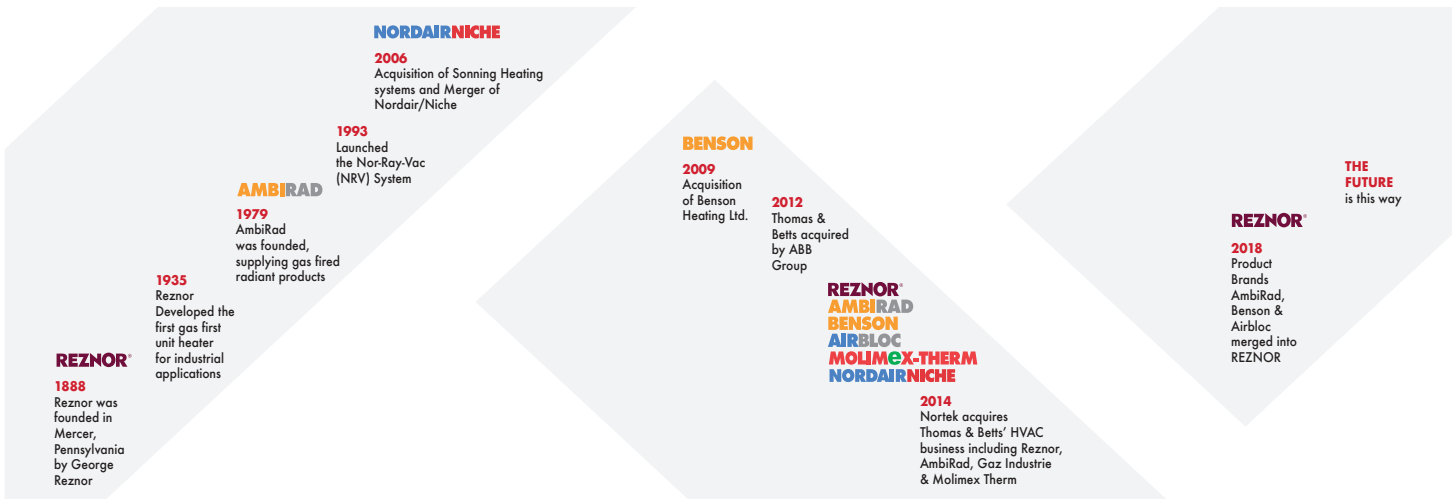
Carriage charges	38
Terms & Conditions	40
Warranty	41

# Our history...

For over 130 years, Reznor has gone from strength to strength, consistently evolving to better serve its customers and maintain its position as a leading provider of heating, cooling and ventilation solutions.

Since the early days as the favoured producer of gas fired stoves for heating residential homes, Reznor has evolved to be the preferred name in industrial and commercial HVAC solutions.

## NORTEK BRAND LEGACY



## RADIANT TUBE HEATER



### VSXO

High efficiency VSXO Optima models are supplied complete with recuperative heat exchanger and styling kit (end caps shown are optional). Available as U-Tube model only.

MODEL	DESCRIPTION	HEAT INPUT kW	GAS RATE (m3/h)	FLUE ADAPTER REFERENCE	LENGTH (m)	LIST PRICE
VSXO20UTE	U-TUBE	25.0	1.9	6	4.1	2571.00
VSXO25UTE	U-TUBE	32.0	2.4	6	4.1	2728.00
VSXO30UTE	U-TUBE	36.0	3.1	6	6.0	3157.00
VSXO35UTE	U-TUBE	40.0	3.4	6	6.0	3305.00
VSXO40UTE	U-TUBE	44.0	3.8	6	6.0	3450.00
VSXO45UTE	U-TUBE	50.0	4.2	6	7.8	3735.00
VSXO50UTE	U-TUBE	50.0	4.7	6	7.8	3874.00

PROPANE MODELS NOT AVAILABLE  
\*WHEN SELECTING OPTIONAL END CAPS, PLEASE ADD 1056MM TO THE LENGTH OF THE UNIT

### End Caps

PART NUMBER	DESCRIPTION	LIST PRICE
VSOCOV2-BLACK	BLACK OPTIONAL END CAPS	413.78
VSOCOV2-BLUE	BLUE OPTIONAL END CAPS	413.78
VSOCOV2-WHITE	WHITE OPTIONAL END CAPS	413.78

REZNOR®

RADIANT TUBE HEATER



VSX	High efficiency VSX models are supplied complete with recuperative heat exchanger. Available as U-tube model only.					
	VISION VSX U-TUBE MODELS WITH FITTED HEAT EXCHANGER (FORCED BURNER)   NATURAL GAS ONLY					
MODEL	DESCRIPTION	HEAT INPUT kW	GAS RATE (m3/h)	FLUE ADAPTOR REFERENCE	LENGTH (m)	LIST PRICE
VSX20UTE2M	U-TUBE	20.0	1.9	6.0	4.0	2175.00
VSX25UTE2M	U-TUBE	25.0	2.4	6.0	4.0	2222.00
VSX30UTE2M	U-TUBE	30.0	2.9	6.0	4.0	2475.00
VSX30UTE3M	U-TUBE	30.0	2.9	6.0	6.0	2653.00
VSX35UTE3M	U-TUBE	36.0	3.4	6.0	6.0	2715.00
VSX40UTE3M	U-TUBE	40.0	3.8	6.0	6.0	2890.00
VSX45UTE3M	U-TUBE	44.0	4.2	6.0	6.0	2938.00
VSX45UTE4M	U-TUBE	44.0	4.2	6.0	7.7	3162.00
VSX50UTE4M	U-TUBE	49.5	4.7	6.0	7.7	3261.00

PROPANE MODELS NOT AVAILABLE  
\*WHEN SELECTING OPTIONAL END CAPS, PLEASE ADD 1056MM TO THE LENGTH OF THE UNIT



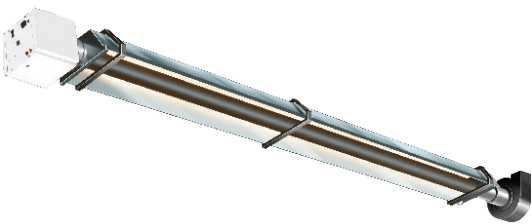
VSUTE

VS models are supplied complete with turbulators, aluminised steel reflector and endcaps.

VISION VSUTE U-TUBE MODELS (INDUCED BURNER) | PROPANE MODELS AVAILABLE

MODEL	DESCRIPTION	HEAT INPUT kW	GAS RATE (m3/h)	NAT GAS	LPG	LENGTH (m)	LIST PRICE
VS15UTE	U-TUBE	15.0	1.4	1	1	4.5	1520.00
VS20UTE	U-TUBE	19.5	1.9	1	1	5.1	1631.00
VS25UTE	U-TUBE	23.5	2.3	1	1	5.1	1741.00
VS30UTE	U-TUBE	32.0	3.1	1	1	7.6	1996.00
VS35UTE	U-TUBE	36.0	3.4	1	1	7.6	2107.00
VS40UTE	U-TUBE	40.0	3.8	4	4	8.5	2217.00
VS45UTE	U-TUBE	44.0	4.2	4	4	9.4	2326.00
VS50UTE	U-TUBE	48.0	4.6	4	4	9.4	2439.00

RADIANT TUBE HEATER



VSLIE STANDARD	VSLIE models are supplied complete with turbulators, aluminised reflector and end caps.						
	VISION VSLIE LINEAR MODELS (INDUCED BURNER) - STANDARD LENGTH MODELS						
MODEL	DESCRIPTION	HEAT INPUT kW	GAS RATE (m3/h)	FLUE ADAPTER REFERENCE		LENGTH (m)	LIST PRICE
				NAT GAS	LPG		
VS15LIE8	STANDARD 'SL' TUBE	15.0	1.4	1	1	8.0	1506.00
VS20LIE10-5	STANDARD 'SL' TUBE	19.5	1.9	1	1	10.5	1715.00
VS25LIE8	STANDARD 'SL' TUBE	23.5	2.3	1	1	8.0	1670.00
VS30LIE10-5	STANDARD 'SL' TUBE	32.0	3.1	1	4	10.5	1838.00
VS35LIE10-5	STANDARD 'SL' TUBE	36.0	3.4	1	4	10.5	1994.00
VS40LIE13-5	STANDARD 'SL' TUBE	40.0	3.8	1	4	13.5	2166.00
VS45LIE13-5	STANDARD 'SL' TUBE	44.0	4.2	1	4	13.5	2192.00
VS50LIE13-5	STANDARD 'SL' TUBE	48.0	4.6	4	4	13.5	2267.00

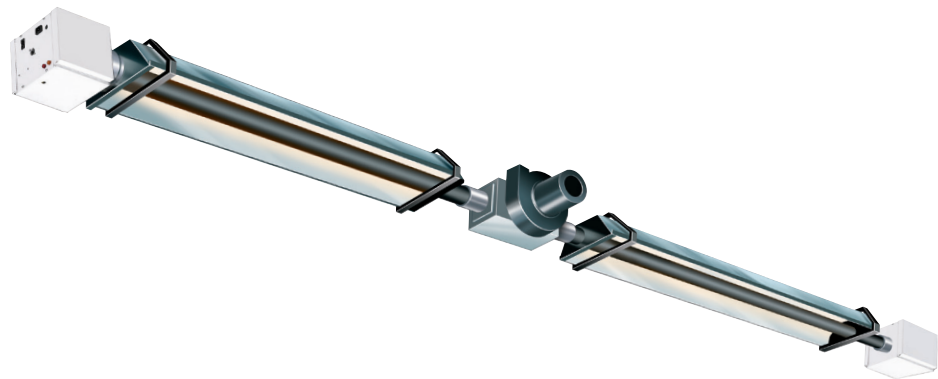
PROPANE MODELS AVAILABLE

VSLIE EXTENDED	VSLIE models are supplied complete with turbulators, aluminised reflector and end caps.						
	VISION VSLIE LINEAR MODELS (INDUCED BURNER) - EXTENDED LENGTH MODELS						
MODEL	DESCRIPTION	HEAT INPUT KW	GAS RATE (m3/h)	FLUE ADAPTER REFERENCE		LENGTH (m)	LIST PRICE
				NAT GAS	LPG		
VS25LIE10-5	EXTENDED 'SL' TUBE	23.5	2.3	1	1	8.0	1868.00
VS30LIE13-5	EXTENDED 'SL' TUBE	29.5	2.8	1	1	10.5	2052.00
VS35LIE13-5	EXTENDED 'SL' TUBE	36.0	3.4	1	1	8.0	2120.00
VS40LIE16	EXTENDED 'SL' TUBE	40.0	3.8	1	4	10.5	2329.00
VS45LIE16	EXTENDED 'SL' TUBE	44.0	4.2	1	4	10.5	2358.00
VS50LIE16	EXTENDED 'SL' TUBE	50.0	4.8	1	4	13.5	2495.00

PROPANE MODELS AVAILABLE

VSLIE MODELS CAN BE USED IN A HERRINGBONE SYSTEM INCORPORATING UP TO 10 HEATERS  
PLEASE CALL 01384 489700 FOR DETAILS





VSDLE

VS models are supplied complete with turbulators, aluminised steel reflector and endcaps.

Vision VSLIE linear models (induced burner) - Extended length models | PROPANE MODELS AVAILABLE

MODEL	DESCRIPTION	HEAT INPUT kW	GAS RATE (m3/h)	FLUE ADAPTER REFERENCE		LENGTH (m)	LIST PRICE
				NAT GAS	LPG		
VS15DLE16	Standard 'DL' Tube	30.0	2.8	4	4	16.0	3153.00
VS20DLE21	Standard 'DL' Tube	39.0	3.8	4	4	21.0	3564.00
VS25DLE16	Standard 'DL' Tube	47.0	4.6	4	4	16.0	3508.00
VS30DLE21	Standard 'DL' Tube	64.0	6.1	4	4	21.0	3841.00
VS35DLE21	Standard 'DL' Tube	72.0	6.8	4	4	21.0	4189.00
VS40DLE27	Standard 'DL' Tube	80.0	7.6	4	5	27.0	4501.00
VS45DLE27	Standard 'DL' Tube	88.0	8.4	5	5	27.0	4588.00
VS50DLE27	Standard 'DL' Tube	100.0	9.6	5	5	27.0	4758.00

\*WHEN SELECTING OPTIONAL END CAPS, PLEASE ADD 1056MM TO THE LENGTH OF THE UNIT

VSDLE

VS models are supplied complete with turbulators, aluminised steel reflector and endcaps.

Vision VSLIE linear models (induced burner) - Extended length models | PROPANE MODELS AVAILABLE

MODEL	DESCRIPTION	HEAT INPUT kW	GAS RATE (m3/h)	FLUE ADAPTER REFERENCE		LENGTH (m)	LIST PRICE
				NAT GAS	LPG		
VS25DLE21	Extended 'DL' Tube	47.0	4.6	4	4	21.0	3825.00
VS30DLE27	Extended 'DL' Tube	64.0	6.1	4	4	27.0	4167.00
VS35DLE27	Extended 'DL' Tube	72.0	6.8	4	4	27.0	4339.00
VS40DLE32	Extended 'DL' Tube	80.0	7.6	4	4	32.0	4751.00
VS45DLE32	Extended 'DL' Tube	88.0	8.4	5	5	32.0	4928.00
VS50DLE32	Extended 'DL' Tube	100.0	9.6	5	5	32.0	5209.00

PART NUMBER	DESCRIPTION	LIST PRICE
6506	1/2" Gas Valve	18.48
6500	1/2" Flexible gas connection (600mm long) Plastic coated stainless steel with union to BS6501 part1. 1991 Class "C" construction	50.19
6500-2	1/2"Flexible gas connection (1.0m long for use with VS40LIE and above) Plastic coated stainless steel with union to BS6501 part1. 1991 Class "C" construction	56.70
6515	Suspension chain (galvanised, 10m length)	33.44
6516	Suspension chain (galvanised, 90m length)	280.94
6524-SUB	Speedlinks x 8	19.36
6518	D Shackle (galvanised) each	2.09
C766300-SUB	Tumbuckle assembly	9.24
V-LO	Lockout relay	160.60
6124	Run on timer (0 to 2hrs)	190.30
1350-3	Undershield deflector 2438mm long c/w 2 x 3" munson rings. For models VS15 to 30	70.95
1350-4	Undershield deflector 2438mm long c/w 2 x 4" munson rings. For models VS35 to 50	75.90

Protective Wire Guard

PART NUMBER	DESCRIPTION	MODEL/DESCRIPTION	LIST PRICE
BG15UTE	U-TUBE	VS15UTE	275.44
BG20-25UTE	U-TUBE	VS20UTE & VS25UTE	413.71
BG30-35UTE	U-TUBE	VS30UTE & 35UTE	476.41
BG40UTE	U-TUBE	VS40UTE	476.41
BG45-50UTE	U-TUBE	VS45UTE & 50UTE	592.90
BG3LE8	U-TUBE	VS15LE 8m	229.68
BG3LE10-5	U-TUBE	VS20LE & 25LE 10.5m	291.06
BG4LE10-5	U-TUBE	VS30LE & 35LE 10.5m	527.67
BG4LE13-5	U-TUBE	VS35LE, 40LE, 45LE & 50LE 13.5m	648.89
BG4LE16	U-TUBE	VS40LE, 45LE & 50LE 16m	800.47
M102005-SUB	U-TUBE	Vision Optima 2 module - 15, 20 & 25 models	POA
M102015-SUB	U-TUBE	Vision Optima 3 module - 30, 35 & 40 models	POA
TBA	U-TUBE	Vision Optima 4 module - 45 & 50 models	POA
6569	U-TUBE	Black bulb sensor guard	42.63

REZNOR®

RADIANT TUBE HEATER ACCESSORIES

Wall Mounting Brackets

PART NUMBER	DESCRIPTION	BRACKETS REQUIRED PER HEATER	LIST PRICE
1001836	VS 30, 35 & 40	4	53.90
1001836	VS 45 & 50	5	53.90
1001836	VS15 8m model & VS25 8m model	4	53.90
1001836	VS20, 25, 30 & 35 10.5m models	5	53.90
1001836	VS30, 35, 40, 45 & 50 13.5m models	6	53.90
1001836	VS40, 45 & 50 16m models	7	53.90

VSXO and VSX Stainless Steel Balanced Flues (100mm diameter)

PART NUMBER	DESCRIPTION	LIST PRICE
33-54-101-FLUE1	1m Length of Pipe	40.53
33-54-102-FLUE23	0.5m Length of Pipe	28.67
33-54-103-FLUE24	0.25m Length of Pipe	21.11
33-54-104-FLUE2	45° Elbow	22.47
33-55- 007-FLUE22	Vertical Terminal	328.55
33-51-522	High temperature flexible Flashing	74.87

Fresh Air Intake Kit & Adaptors (100mm diameter, single skin aluminium)

PART NUMBER	DESCRIPTION	LIST PRICE
VSI-DA	VS & VSLI Ducted Air Adaptor	46.31
VSF-DA	VSX Ducted Air Adaptor	46.31
FAFK-4	Fresh air intake kit (3m x 100mm ID aluminium lengths of pipe (7070-SUB), 1 x rubberised flashing plate & fixing kit (33-51-022) & 1 x 100mm dia terminal (L101590-SUB))	164.33

Flue Connectors

PART NUMBER	DESCRIPTION	ADAPTER REF	LIST PRICE
7177-SUB	125mm (5") Fan/flue connector	1	42.95
7176-SUB	125mm (5") Fan/flue connector	4	45.15
202365	125mm (5") Fan/flue connector	5	45.26
201889	125mm (5") VSX Heat exchanger flue connector	6	60.69

RADIANT TUBE HEATER ACCESSORIES

REZNOR®

Twin Wall Flue Components (125mm diameter, 152mm outside diameter)

PART NUMBER	DESCRIPTION	LIST PRICE
7156-FLUE33	914mm Length of pipe	111.62
7157-FLUE32	1524mm Length of pipe	174.51
7158-FLUE31	450mm Adjustable length of pipe	314.16
33-51-222	Rubberised roof plate with fixing kit	77.89
7162-FLUE34	Gas vent Terminal/cowl	88.52
7166-FLUE30	Adjustable elbow 0 to 90°	88.52

Twin Wall Flue Kits

PART NUMBER	DESCRIPTION	LIST PRICE
TWFK-5A-1	Kit 'A' 1 x 1524mm length tube (7157-FLUE32), 1 x 914mm length tube (7156-FLUE33), 1 x 450mm adjustable length flue (7158-FLUE31), rubberised roof plate and fixing kit (33-51-222) and terminal (7162-FLUE34)	577.50
TWFK-5B-1	Kit 'B' as Kit 'A' plus 2 adjustable elbows (7166-FLUE30)	714.00

SmartCom controls

PART NUMBER	MODEL	LIST PRICE
B-SC3ML-SZR	SmartCom single zone controller Std functions include (but not limited to):- single stage heating, self-adapting optimised start, volt free BMS over-ride, timeclock with overtime facility, fan only operation, frost protection, night set- back, burner lockout indication with reset, internal thermostat	298.73
B-SC3ML-MZR	SmartCom multi zone controller As single zone model, but with the following additional functions: two stage heating & cooling, modulating burner control, networking function	420.21
29-01-222	SmartCom black bulb sensor	65.94

REZNOR®

RADIANT TUBE HEATER



BTwin

BTwin models are supplied complete with turbulators, polished aluminised double curved primary reflector with insulated secondary reflector (for optimum efficiency) and endcaps.

BTWIN LINEAR MODELS | PROPANE MODELS AVAILABLE

MODEL	DESCRIPTION	HEAT INPUT kW	GAS RATE (m3/h)	FLUE DIA mm	LENGTH (m)	LIST PRICE
BTLH2R25	Single linear tube	21.0	2.2	100	8.8	3581.00
BTLH2R35	Single linear tube	35.0	3.7	100	11.1	4347.00
BTLH2R45	Single linear tube	45.0	4.7	100	16.1	5931.00

BTwin Optional Equipment

PART NUMBER	DESCRIPTION	25 LIST PRICE	35 LIST PRICE	45 LIST PRICE
4003106	Flue adapter	47.67	47.57	47.57
Sundries				
6510	¾" BSP gas valve	19.73	19.73	19.73
6500-1	¾" BSP Flexible gas connection	56.70	56.70	56.70

RADIANT PLAQUE HEATER

REZNOR®



SCR-ECO

SCR-ECO units are for use with natural gas as standard and are fitted with a fully automatic burner ignition system requiring a 240v single phase electrical supply. Each unit is supplied with wall mounting brackets and a loose LPG jet.

MODEL	DESCRIPTION	HEAT INPUT KW	LIST PRICE
SCR-ECO-7/4	7.5kW gas fired plaque heater	21.0	951.00
SCR-ECO-18/10	17.5kW gas fired plaque heater	35.0	1146.00
SCR-ECO-29/16	27.0kW gas fired plaque heater	45.0	1341.00
SCR-ECO-44/12+12	41.8kW gas fired plaque heater	40.5	1872.00

Sundries

PART NUMBER	DESCRIPTION	LIST PRICE
6506	½" BSP Gas tap	18.48
6500	½" BSP Flexible connector 600mm long	50.19



Titan Electric Radiant Heater

MODEL	DESCRIPTION	HEAT INPUT KW	DIMENSIONS (mm)	MOUNTING HEIGHT (mm)	LIST PRICE
TI-STAT	Static heater	3.0	669 x 430 x 509	2.0	719.00
TI-MOB	Mobile heater	3.0	1140 x 650 x 650	2.5 to 4.0	979.00



Quartz glow

The Sorrento range is a robust weatherproof heater available in three configurations. All models are supplied with a wall mounting bracket & for use with single phase electrical supply.

SORRENTO ELECTRIC HEATER | BRACKETS INCLUDED

MODEL	DESCRIPTION	HEAT INPUT KW	DIMENSIONS (mm)	MOUNTING HEIGHT (mm)	LIST PRICE
SORDL 15	Single linear tube	1.5	402 x 227 x 112	2.0	384.00
SORDL 30	Double linear tube	3.0	790 x 227 x 112	2.5 to 4.0	654.00
SORTL 45	Triple linear tube	4.5	1178 x 227 x 112	2.5 to 4.0	940.00



Quartz glow

The Sorrento range is a robust weatherproof heater available in three configurations. All models are supplied with a wall mounting bracket & for use with single phase electrical supply.

SORRENTO ELECTRIC HEATER | BRACKETS INCLUDED

MODEL	DESCRIPTION	HEAT INPUT KW	DIMENSIONS (mm)	MOUNTING HEIGHT (mm)	LIST PRICE
QH 30-1	Double tube	3.0	790 x 227 x 112	3.0 to 4.5	691.00
QH 45-1	Triple tube	4.5	1178 x 227 x 112	3.5 to 5.5	891.00
QH 45-3	Triple tube - 3ph	4.5	422 x 525 x 110	3.5 to 5.5	954.00
QHL 30-1	Double linear tube	3.0	857 x 255 x 110	3.0 to 4.5	729.00
QHL 45-1	Triple linear tube	4.5	1282 x 255 x 110	3.5 to 5.5	1008.00
QHL 45-3	Triple linear tube - 3ph	4.5	1282 x 255 x 110	3.5 to 5.5	1052.00
QHL 90-3	Triple double linear tube - 3ph	9.0	857 x 630 x 110	5.0 to 7.0	1762.00



# REZNOR® CONTINUOUS RADIANT TUBE HEATER

Nor-Ray-Vac is a continuous radiant tube heating system designed to provide uniform heat coverage over the entire floor area. Alternatively, the system can also cater for distinct zones providing a varied degree of comfort level within the overall layout of the building.

Nortek strives to become part of the 'design team', working closely with engineers or end users to determine the specific design parameters for the Nor-Ray-Vac scheme layout. This contact between the company's engineers and the system designer or client will give the most effective Nor-Ray-Vac system.

The result is a heating system designed specifically for the needs of the building and the way that the premises are managed.

## Model Range

The Nor-Ray-Vac Series continuous radiant tube heating system includes six natural gas (or propane) modulating burner models from 12 to 46kW, radiant tube lengths from 5.2 to 27 metres. Maximum tube temperatures range from 450°C to 480°C.

## System Operation

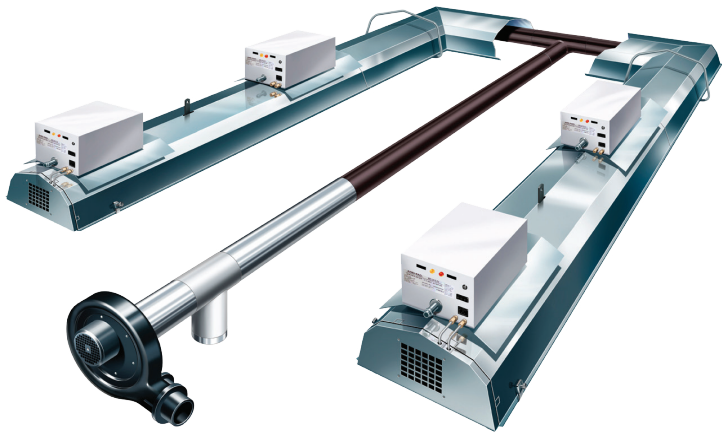
The system operates on a vacuum principle and utilises a zero governor within a dedicated gas valve ensuring optimum efficiency, reliability and safety.

The zero governor will only allow flow of gas when a vacuum is created by the fan. Therefore as well as the standard failsafe (where the gas valve locks out with ignition or gas supply failure), the zero governor also mechanically prevents gas flow in the event of vacuum shut down. The control of gas flow through the zero governor and the air flow into the mixing chamber while under the influence of the vacuum fan, enables stoichiometric combustion at the burner head.

Stoichiometric combustion permits the inclusion of further burners within the same tubing 'downstream' from the first burner, ensuring evenly distributed heat along the length of radiant tube.

Conforming to the European Gas Appliance regulations (EN 777), the end vent module burner has been developed to 'prove' flow of air at the start of each radiant branch. The end vent module burner is a unique feature to the Nor-Ray-Vac system and instils the principle of 'safety of operation' as a prerequisite of design.

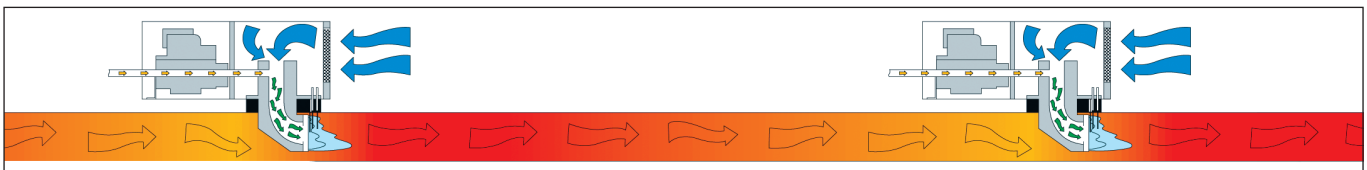
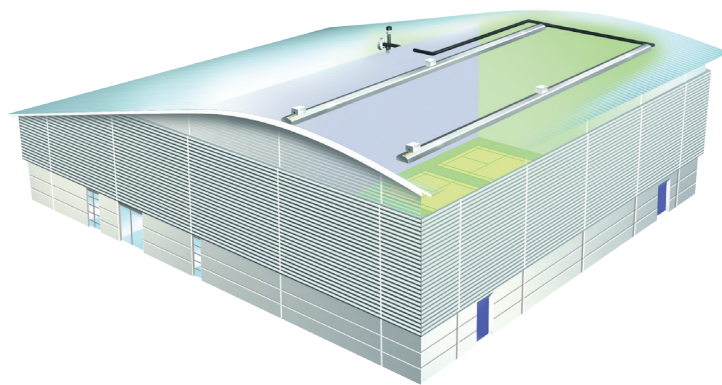
## NOR-RAY-VAC



NOR-RAY-VAC

Please contact sales on 01384 489700 for more information on Nor-Ray-Vac continuous radiant tube system

£POA



# CONTINUOUS RADIANT TUBE HEATER

# REZNOR®

## Sonning² OHA

Sonning² OHA is a continuous gas fired radiant tube heating system fitted with either a single internal or external burner, which employs 80% flue gas re-circulation and is designed specially for the building it is required to heat.

The inclusion of modulating burner on the OHA RHE ranges enables thermal efficiencies of up to 96% to be achieved.

The OHA system is designed to provide uniform heat coverage over the entire floor area. The system can also cater for distinct zones providing a varied degree of comfort level within the overall layout of the building.

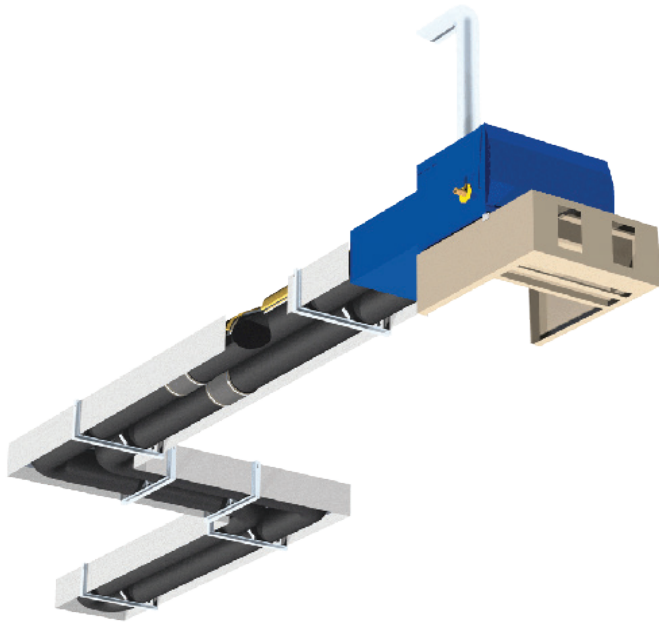
Nortek strives to become part of the 'design team', working closely with engineers or end users to determine the specific design parameters for the OHA scheme layout. This contact between the company's engineers and the system designer or client will give the most effective OHA system.

## Model Range

The OHA Series radiant tube heating system includes nine natural gas or propane burner models from 50 to 400kW, radiant tube lengths from 25 to 400 metres. Maximum tube temperatures range from 200°C to 350°C.

The OHA RHE Modulating Series radiant tube heating system includes 6 natural gas or propane burner models from 100 to 370kW, radiant tube lengths from 35 to 250 metres. Maximum tube temperatures range from 120°C to 290°C.

The heaters will operate equally as effective on a wide variety of fuels; natural gas, LPG and oil (OHA only)



SONNING²

Please contact sales on 01384 489700 for more information on Sonning² continuous radiant tube system

£POA







RHeco

Gas fired ultra high efficiency, low NO<sub>x</sub> condensing, suspended warm air unit heater. Supplied with axial fan, modulating burner, automatic ignition, horizontal & vertical louvres.

PROPANE MODELS AVAILABLE

MODEL	HEAT INPUT KW	AIRFLOW (m3/h)	FLUE DIA (mm)	LIST PRICE
ULSA 025	25.0	2900	80	4459.00
ULSA 035	33.0	3700	80	4720.00
ULSA 050	50.0	5600	80	4897.00
ULSA 075	70.0	7900	100	6254.00
ULSA 100	94.0	10500	100	6914.00

RHeco Optional Equipment

PART NUMBER	DESCRIPTION	025 LIST PRICE	035 LIST PRICE	050 LIST PRICE	075 LIST PRICE	100 LIST PRICE
TBA	Air outlet discharge 30o downturn nozzle	127.37	127.37	127.37	150.57	150.57
TBA	Supply air fan Modulating fan (100% to 50%)	414.44	409.82	345.03	631.05	635.67
TBA	Thermostat Air re-circulating thermostat	144.80	144.80	144.80	144.80	144.80
B-sc3ml-mzr 29-01-219	Controls	0.00	0.00	0.00	0.00	0.00
	SmartCom multi zone control panel	420.11	420.11	420.11	420.11	420.11
	Remote room sensor (for use with SmartCom)	65.94	65.94	65.94	65.94	65.94
Sundries						
6506	½" BSP gas valve	18.48	18.48	-	-	-
6510	¾" BSP gas valve	-	-	19.74	19.74	19.74
6500	½" BSP flexible connection	50.19	50.19	-	-	-
6500-1	¾" BSP flexible connection	-	-	56.70	56.70	56.70
TBA	Wall brackets	219.98	219.98	219.98	219.98	219.98
6529	Drop rods M10 x 3 metre	12.29	12.29	12.29	12.29	12.29



PHOTON

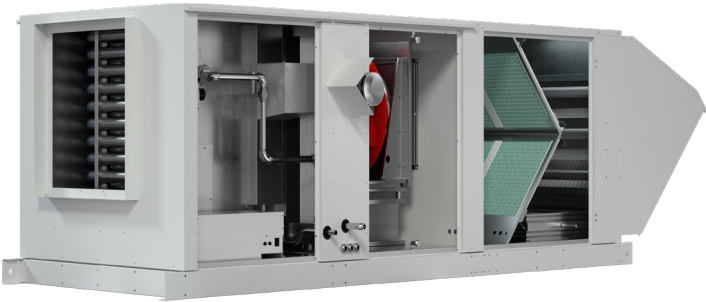
Gas fired unit heater with a high airflow axial fan for free blowing applications, a modulating burner and units are available for natural gas (G20,G25, G25.3) as standard.

MODEL	HEAT OUTPUT KW	AIRFLOW (m3/h)	FLUE DIA (mm)	LIST PRICE
PHOTON 10	9.34	1223	80	2415.00
PHOTON 20	18.39	2533	80	2657.00
PHOTON 25	26.54	3035	100	2778.00
PHOTON 35	31.68	4120	100	2898.00
PHOTON 45	42.24	4562	100	3019.00
PHOTON 55	53.46	5877	100	3381.00
PHOTON 65	63.59	7125	130	3623.00
PHOTON 70	71.25	8681	130	4046.00
PHOTON 100	97.87	10350	130	4650.00
PHOTON 120	120.16	17552	130	6279.00

PART NUMBER	DESCRIPTION	LIST PRICE 10/20/25	LIST PRICE 35/45/55/65/70/100	LIST PRICE 120
TBA	Air outlet discharge 30o downturn nozzle	TBA	TBA	TBA
B-sc3ml-mzr 29-01-219	Controls			
	SmartCom multi zone control panel	420.11	420.11	420.11
	Remote room sensor (for use with SmartCom)	65.94	65.94	65.94
Sundries				
6506	½" BSP gas valve	18.48	-	-
6510	¾" BSP gas valve	-	19.73	-
1023509	1" BSP gas valve	-	-	23.94
6500	½" BSP flexible connection	50.19	-	-
6500-1	¾" BSP flexible connection	-	56.70	-
1023510	1" BSP flexible connection	-	-	84.53
R-WMB1	Fixed Wall mounting Bracket Photon 10, 20	167.90	-	-
R-WMB2	Fixed Wall mounting Bracket Photon 25-100	219.98	219.98	-
6529	Drop rods M10 x 3 metre	12.29	12.29	12.29

REZNOR®

HEATING AND VENTILATION UNIT



PREEVA  
NEOS

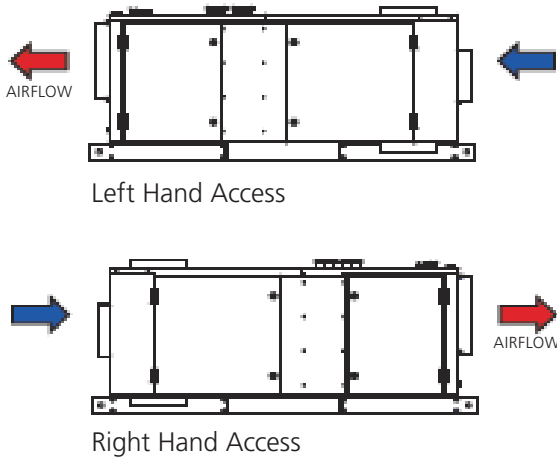
Gas fired air heater units providing combined heating and ventilation with optional cooling. 4-pass heat exchanger technology, single burner with multi-try ignition and direct expansion (DX) and chilled water (CHW) cooling coils.

MODEL	DESCRIPTION	HEAT OUTPUT KW	COOLING OPTION KW (OPTIONAL)	MIN AIRFLOW (m3/h)	MAX AIRFLOW (m3/h)	LIST PRICE
PRN025-I	25kW PREEVA NEOS	26.61	19.00	2000	3500	£POA
PRN035-I	35kW PREEVA NEOS	34.41	28.00	2530	5080	£POA
PRN045-I	45kW PREEVA NEOS	42.52	30.00	3060	6100	£POA
PRN055-I	55kW PREEVA NEOS	53.56	30.00	3980	7000	£POA
PRN070-I	70kW PREEVA NEOS	70.66	51.00	5300	10500	£POA
PRN100-I	100kW PREEVA NEOS	99.12	63.00	8060	14000	£POA
PRN025-I-1PH	25kW PREEVA NEOS, single phase	26.61	19.00	2000	3500	£POA
PRN035-I-1PH	35kW PREEVA NEOS, single phase	34.41	28.00	2530	5080	£POA

MODEL	DESCRIPTION	HEAT OUTPUT KW	COOLING OPTION KW (OPTIONAL)	MIN AIRFLOW (m3/h)	MAX AIRFLOW (m3/h)	LIST PRICE
PRN025-E	25kW PREEVA NEOS	26.61	19.00	2000	3500	£POA
PRN035-E	35kW PREEVA NEOS	34.41	28.00	2530	5080	£POA
PRN045-E	45kW PREEVA NEOS	42.52	30.00	3060	6100	£POA
PRN055-E	55kW PREEVA NEOS	53.56	30.00	3980	7000	£POA
PRN070-E	70kW PREEVA NEOS	70.66	51.00	5300	10500	£POA
PRN100-E	100kW PREEVA NEOS	99.12	63.00	8060	14000	£POA
PRN025-E-1PH	25kW PREEVA NEOS, single phase	26.61	19.00	2000	3500	£POA
PRN035-E-1PH	35kW PREEVA NEOS, single phase	34.41	28.00	2530	5080	£POA

HEATING AND VENTILATION UNIT

REZNOR®



PREEVA NEOS

Each configuration is unique, please contact the team for further advice.reznorsales@nortek.com or 01384 489700.

£POA

Optional Equipment

OPTIONS	OPTIONS
Air Discharge selection	Supply air Duct Spigot
	Standard Louvre frame with horizontal louvres
	Vertical louvres
	30° Discharge Nozzle with Horizontal louvres
	60° Discharge Nozzle with Horizontal louvres
	Downturn cabinet with PE Insulation
Filer/Mixing Cabinet Selection	Mixing Cabinet with a selection of duct spigot connections, located at the Top, Rear or Bottom. 1-2 can be selected.
	Additional damper options
	Vertical louvres
	G4 50mm Panel filters
	EU5 & EU7 Bag filters
Cooling Options	DX Cooling coils
	Chilled Water Cooling coils
Miscellaneous controls	Dirty filter control

REZNOR®

SEALED STAINLESS STEEL FOR GAS UNIT HEATERS

Option 1 - Fan Assisted Stainless Steel Flue Only

DESCRIPTION		80 mm	100 mm	130 mm
Horizontal flue terminal	Part No.	33-54-006-FLUE21	33-54-106-FLUE25	33-54-206-FLUE26
	List Price	139.97	151.10	175.56
Vertical flue terminal	Part No.	33-54-007-FLUE22	33-54-107-FLUE4	33-54-207-FLUE10
	List Price	43.47	64.58	65.84
To connect with terminal & heater				
Pipe 1m length	Part No.	33-54-001-FLUE16	33-54-101-FLUE1	33-54-201-FLUE5
	List Price	31.82	35.60	50.19
Pipe 0.5m length	Part No.	33-54-002-FLUE17	33-54-102-FLUE23	33-54-202-FLUE6
	List Price	23.73	23.73	34.34
Pipe 0.25m length	Part No.	33-54-003-FLUE18	33-54-103-FLUE24	33-54-203-FLUE7
	List Price	18.59	21.11	31.82
90° Elbow	Part No.	33-54-005-FLUE20	33-54-105-FLUE3	33-54-205-FLUE9
	List Price	29.09	34.13	40.95
45° Elbow	Part No.	33-54-004-FLUE19	33-54-104-FLUE2	33-54-204-FLUE8
	List Price	26.46	22.47	35.60
Horizontal flue terminal guard (basket)	Part No.	39-15-001	39-15-001	39-15-001
	List Price	23.84	23.84	23.84
Flexible flashing for flat roof or corrugated sheets (single pipe)	Part No.	33-51-022	33-51-522	33-51-622
	List Price	60.06	74.87	124.74

Option 2 - Room Sealed Stainless Steel Flue Components

DESCRIPTION		80 mm	100 mm	130 mm
Horizontal concentric flue terminal assembly	Part No.	33-55-009-FLUE27	33-55-106-FLUE13	33-55-206-FLUE12
	List Price	174.93	218.30	315.53
Vertical concentric flue terminal assembly	Part No.	33-55-010-FLUE28	33-55-107-FLUE11	33-55-207-FLUE29
	List Price	250.53	328.55	405.51
To connect with terminal & heater				
Pipe 1m length	Part No.	33-54-001-FLUE16	33-54-101-FLUE1	33-54-201-FLUE5
	List Price	2 x 31.82	2 x 35.60	2 x 50.19
Pipe 0.5m length	Part No.	33-54-002-FLUE17	33-54-102-FLUE23	33-54-202-FLUE6
	List Price	2 x 23.73	2 x 23.73	2 x 34.34
Pipe 0.25m length	Part No.	33-54-003-FLUE18	33-54-103-FLUE24	33-54-203-FLUE7
	List Price	2 x 18.59	2 x 21.11	2 x 31.82
90° Elbow	Part No.	33-54-005-FLUE20	33-54-105-FLUE3	33-54-205-FLUE9
	List Price	2 x 29.09	2 x 34.13	2 x 40.95
45° Elbow	Part No.	33-54-004-FLUE19	33-54-104-FLUE2	33-54-204-FLUE8
	List Price	2 x 26.46	2 x 22.47	2 x 35.60
Horizontal flue terminal guard (basket)	Part No.	39-15-001	39-15-001	39-15-001
	List Price	23.84	23.84	23.84
Flexible flashing for flat roof or corrugated sheets (single pipe)	Part No.	33-51-022	33-51-522	33-51-622
	List Price	60.06	74.87	124.74

DESTRATIFICATION FANS



REZNOR®

DS Destratification Fans

PART NUMBER	MODEL	PRIMARY AIRFLOW (m3/h)	MOUNTING HEIGHT	LIST PRICE
DS3-4	DS 3	3000	4 to 8m	518.00
DS4-4	DS 4	5300	6 to 12m	733.00
DS6-4	DS 6	6600	6 to 12m	748.00
DS10-4	DS 10	9000	10 to 18m	925.00

DS Optional Equipment

PART NUMBER	DESCRIPTION	LIST PRICE	LIST PRICE
28-00-301	Stainless Steel wire roof fixing kit		97.86

IM Low Velocity Impellor Destratification Fans

PART NO	MAX PRIMARY AIR FLOW M3/h	MOUNTING HEIGHT m	TYPICAL FLOOR COVERAGE m	LIST PRICE
B-IM1400-C	Up to 12.000	2.5 to 12 m	130	142.49
Controllers IM fans must be used with one of the IMC controllers below				
B-IMC5	1 to 5 fans			81.77
B-IMC12	1 to fans			549.93



COMET

The Reznor COMET Cabinet heaters are supplied fitted with a fully automatic two stage forced draught burner, efficient EC plug fans and a stainless steel combustion chamber. All models operate on a 3 phase supply and are supplied with a SmartCom Control Panel as a loose component. Available as ducted or Free blowing, free blowing models are supplied with four directional nozzles and two raised extension pieces.

ALL MODELS ARE AVAILABLE IN NATURAL GAS FIRED, PROPANE FIRED OR OIL FIRED VERSIONS. OIL FIRED MODELS ARE SUPPLIED WITH A FIRE VALVE AND AN OIL FILTER AS LOOSE COMPONENTS

Comet Cabinet Heaters

MODEL	HEAT OUTPUT KW	AIRFLOW (m3/h)	Available ESP (pa)	FLUE DIA (mm)	Natural Gas Fired		Oil Fired		Propane (LPG) Fired	
					Ducted (D-N)	Nozzled (N-N)	Ducted (D-O)	Nozzled (N-O)	Ducted (D-P)	Nozzled (N-P)
COMET045	44.00	3,278	250	150	7806.00	8140.00	7254	7589.00	7806.00	8140.00
COMET060	59.00	4,288	250	150	8201.00	8535.00	7648	7982.00	8201.00	8535.00
COMET090	88.00	6,099	250	150	8437.00	8772.00	7806	8140.00	8437.00	8772.00
COMET150	147.00	10,430	250	180	9225.00	9676.00	8593	9045.00	9225.00	9676.00
COMET175	176.00	13,113	250	200	11433.00	11883.00	10487	10937.00	11433.00	11883.00
COMET205	205.00	15,273	250	250	12854.00	13303.00	11907	12357.00	12854.00	13303.00
COMET295	293.00	20,790	250	250	14747.00	15195.00	13248	13697.00	14747.00	15195.00

COMET

Please contact sales on 01384 489700 for more information our COMET Cabinet heaters, and the team can provide selection advice.

Comet Flue & Acc

DESCRIPTION		150mm	180mm	200mm	250mm
Starter Kit (Raincap, 1x 1m length, 1x storm collar, 1x Adjustable flashing kit, 1x Clamp band)	Part No.	CF150-FK	CF180-FK	CF200-FK	CF250-FK
	List Price	335.74	367.38	366.77	493.41
Universal Raincap	Part No.	CF150-TERM	CF180-TERM	CF200-TERM	CF250-TERM
	List Price	81.72	95.64	111.58	140.96
1m length flue pipe	Part No.	CF150-1M	CF180-1M	CF200-1M	CF250-1M
	List Price	90.28	107.92	92.08	119.23
0.5m length flue pipe	Part No.	CF150-0.5M	CF180-0.5M	CF200-0.5M	CF250-0.5M
	List Price	49.64	59.39	50.67	65.57
90° elbow	Part No.	CFT150-90ELB	CFT180-90ELB	CFT200-90ELB	CFT250-90ELB
	List Price	70.94	90.33	76.78	96.57
45° elbow	Part No.	CFT150-45ELB	CFT180-45ELB	CFT200-45ELB	CFT250-45ELB
	List Price	36.53	59.22	51.64	64.98
90° Tee	Part No.	CFT150-90TEE	CFT180-90TEE	CFT200-90TEE	CFT250-90TEE
	List Price	95.42	143.11	132.14	161.47
Joint clamp band	Part No.	CF150-JC	CF180-JC	CF200-JC	CF250-JC
	List Price	8.08	8.89	8.11	9.68
Storm Collar	Part No.	CF150-SC	CF180-SC	CF200-SC	CF250-SC
	List Price	47.89	50.94	53.39	74.11
Adjustable Flashing With Storm Collar	Part No.	CF150-FF1	CF180-FF1	CF200-FF1	CF250-FF1
	List Price	183.64	185.56	185.56	264.63
Adjustable Flashing 30°/45° With Storm Collar	Part No.	CF150-FF2	CF180-FF2	CF200-FF2	CF250-FF2
	List Price	220.28	222.25	222.25	301.64
Adjustable Flashing 5°/30° With Storm Collar	Part No.	CF150-FF3	CF180-FF3	CF200-FF3	CF250-FF3
	List Price	220.28	222.25	222.25	301.64



# REZNOR® ECHO AIR ROTATION UNITS

The Reznor ECHO Air rotation units are ideal for applications such as distribution centres and warehouses requiring frost protection or constant background temperatures. The system provides even heating over large areas and eliminates the requirement for ductwork or de-stratification fans.

Simple fast track installation provides an economic and efficient solution with low ongoing maintenance costs.

The range are both UKCA and CE approved units with thermal efficiency in excess of 91% ECHO Air Rotation provides a simple cost effective solution by utilising a much greater supply air volume with only a low temperature rise.

The system draws in the cooler air at low level and rotates the air to high level where it mixes with the warmer air. This develops a gentle airflow pattern, displacing the high level hot air and returning it to floor level to provide automatic de-stratification.

When additional heat is required the supply air is tempered to give a minimal temperature difference between air discharge and the space temperature so that the natural tendency of the hot air to stratify is virtually eliminated. The rotation of large air volumes of tempered air provides even wall to wall and floor to roof temperature distribution and allows heat gains from lighting and other sources to be re-circulated to low level to reduce energy consumption.

**Model Range**  
The ECHO range has four models; Lieutenant, Captain, Major and Colonel. Each model has a maximum and minimum kW Output, plus a maximum and minimum Airflow range.

Available as heated (via Natural Gas or Propane) or as a De-stratification model (no heat).

## ECHO

### ECHO

Please contact sales on 01384 489700 for more information our ECHO Air rotation units, and the team can provide selection advice.  
**£POA**



- Features and Benefits**
- Large areas heated by a single unit so that number of units is reduced to a minimum
  - Fewer units, all sited at low level reduces ongoing maintenance costs
  - No requirement for high level de-stratification fans
  - No requirement for costly ductwork installation
  - Higher thermal efficiency for reduced running costs
  - Heat outputs up to 586kW from a single unit
  - High burner turndown ratio for closer temperature control



# GENCO MODULAR AIR HANDLING SYSTEM

# REZNOR®

## GENCO

The Reznor GENCO Modular air system is a range of heating, cooling, and ventilation units, offering energy efficient solutions for large open areas. The modular system can be configured to provide various Heating and Cooling outputs with differing battery types for a range of air volumes for both supply and extract. This allows our teams utilize the modules to suit your needs.

- Model Range Outputs**
- Air volume range; 5m3/s to 25m3/s
  - External static pressure available up to 1000pa
  - Heat Outputs 128kW to 606kW
  - Cooling Outputs

- Modules includes:**
- Fan Only Module
  - Supply Air Module
  - Extract Air Module

- Heater Module**
- Indirect gas fired heat exchanger
  - Direct gas fired heat exchanger
  - Electric heating coil (max 117kW)
  - LPHW heating coils
  - DX heat pump coils

- Cooling Module**
- DX cooling coil
  - Chilled water coil

- Filter Module**
- Slimline filter section (Panel filters)
  - Standard filter section (Bag Filtration)

- Silencer Module**  
**Mixing Box Module**  
**Cross flow heat recovery Module**



### GENCO

Please contact sales on 01384 489700 for more information our GENCO Modular air system, and the team can provide selection advice.  
**£POA**





# REZNOR® AIR INDUCTON DISTRIBUTION SYSTEM

The Air Mix high induction air distribution system is an innovative concept that is quick and easy to install, reliable, and inexpensive in operation. It provides an evenly diffused distribution of warm air and is ideal for open warehouse or retail areas without false ceilings.

The system utilises a lightweight duct that has a large number of small outlet nozzles, either evenly spaced along the length of the duct or located in specific areas.

Air is introduced into the duct and forced out of the nozzles at high speed, creating a negative pressure zone - thereby inducing surrounding air and recirculating "free heat" from lighting and heat that has risen to the roof space which would normally be wasted.

The result is a very evenly distributed heat at low air velocities and low noise levels, eliminating excess heat stratification and the need for air re-circulation fans.

## Model Range

The Air Mix diffusers are made with airtight fireproof fabric, which thanks to a special treatment will remain unaltered over time. They are available in a range of diameters & colours, all are supplied complete with assembly kit.

The kit includes:

- Tailor made duct
- Fixing bands
- Suspension system

## Specification

Air Mix is centred on an innovative duct system manufactured from a fire resistant coated fabric, specially treated against dust, and acid vapours for guaranteed stability.

The system allows the use of smaller duct diameters, reducing the weight on the building structure and reduces installation time.



AIRMIX

Please contact technical design on 01384 489700 for more information on AirMix induction air distribution systems

£POA

Each system is custom designed and manufactured in accordance with individual specifications, with the number, layout and diameter of ducts determined for maximum efficiency. Ducts are available in a wide range of colours to suit the decor of the location and require no further decorative finish on site. Final adjustments are carried out after installation and the system needs minimal maintenance.



# AIR INDUCTON DISTRIBUTION SYSTEM

# REZNOR®

Reznor Smitsair® offer an alternative air induction system that gives optimal air distribution in large open space premises, such as market halls and warehouses.

The aerodynamic construction of the nozzles makes it possible to achieve airflow velocities of 10 to 30m/s at a proportionally low nozzle pressure. The nozzles may be applied in groups on plenums or spaced out along a conventional duct system, allowing for flexible or irregular heating patterns in any large premises.

Primary air at high velocity entrains and recirculates large volumes of secondary air to produce a comfortable working environment.

The nozzles are easy to fit or remove by hand and the direction of the airflow can be adjusted after assembly from 0° to 60° Air throw - from 15 to 50 metres - is calculated before assembly and may be adjusted during installation.

The Smitsair® system can be used to heat, cool or ventilate large spaces with negligible differences in vertical and horizontal air temperatures.

## Features & Benefits

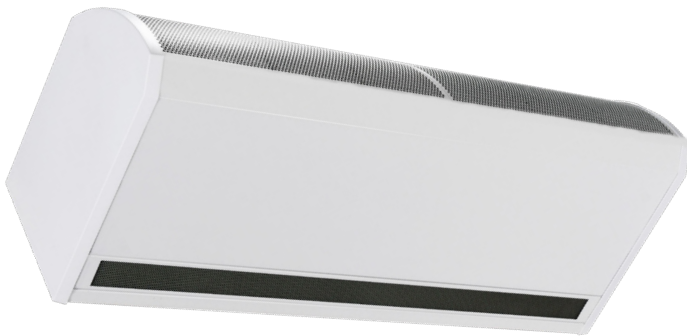
- Low static pressure
- Uniform distribution of air
- Adjustable nozzles
- Long throws available
- Low noise
- Available in black or white



SMITSAIR

Please contact technical design on 01384 489 250 for more information on Smitsair high induction systems

£POA



GUARDIAN  
GS

Guardian GS series are commercial/retail air curtains designed for suspension via drop rods, or wall mounting via optional wall brackets, to serve doors/entrances. Standard colour is white (RAL9003), other RAL colours are available at additional cost.

AVAILABLE IN THREE VERSIONS:- AMBIENT (UNHEATED), ELECTRIC (HEATED) OR LPHW (HEATED)

Electric (heated) Models

MODEL	HEAT OUTPUT kW	DOOR WIDTH (mm)	MAX DOOR HEIGHT (mm)	MAX AIRFLOW (m3/h)	LIST PRICE
GS1000E	9/12	1000	4000	1800	1738.00
GS1500E	12/18	1500	4000	2700	2369.00
GS2000E	18/24	2000	4000	3600	2953.00

LPHW (heated) Models

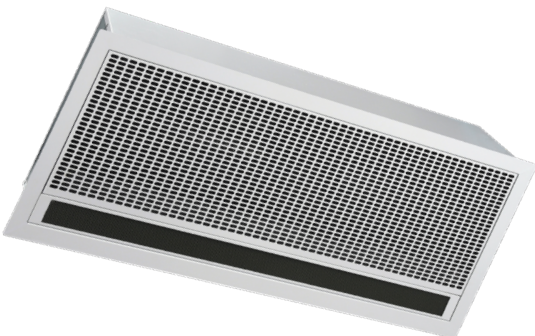
MODEL	HEAT OUTPUT kW	DOOR WIDTH (mm)	MAX DOOR HEIGHT (mm)	MAX AIRFLOW (m3/h)	LIST PRICE
GS1000W	12.0	1000	4000	1800	1820.00
GS1500W	18.0	1500	4000	2700	2452.00
GS2000W	24.0	2000	4000	3600	3034.00

Ambient (no heating) Models

MODEL	DOOR WIDTH (mm)	MAX DOOR HEIGHT (mm)	MAX AIRFLOW (m3/h)	LIST PRICE
GS1000A	1000	4000	1800	1664.00
GS1500A	1500	4000	2700	2365.00
GS2000A	2000	4000	3600	2877.00

Guardian Optional Equipment

PART NUMBER	DESCRIPTION	LIST PRICE
GS-FXT	Emergency exit kit (customer fit)	147.00
GS-WMB	Wall mounting (suspension) brackets (pair)	43.05
	Finish to specific RAL Colour	POA



GUARDIAN  
GR

Guardian GR series are (recessed cased) commercial/retail air curtains designed for discreet positioning in a suspended ceiling or bulkhead above doorways. Standard colour for the grille surround is white (RAL9003).

AVAILABLE IN THREE VERSIONS:- AMBIENT (UNHEATED), ELECTRIC (HEATED) OR LPHW (HEATED)

Electric (heated) Models

MODEL	HEAT OUTPUT kW	DOOR WIDTH (mm)	MAX DOOR HEIGHT (mm)	MAX AIRFLOW (m3/h)	LIST PRICE
GR1000E	9/12	1000	4000	1800	2194.00
GR1500E	12/18	1500	4000	2700	3169.00
GR2000E	18/24	2000	4000	3600	3742.00

LPHW (heated) Models

MODEL	HEAT OUTPUT kW	DOOR WIDTH (mm)	MAX DOOR HEIGHT (mm)	MAX AIRFLOW (m3/h)	LIST PRICE
GR1000W	12.0	1000	4000	1800	2089.00
GR1500W	18.0	1500	4000	2700	3004.00
GR2000W	24.0	2000	4000	3600	3563.00

Ambient (no heating) Models

MODEL	DOOR WIDTH (mm)	MAX DOOR HEIGHT (mm)	MAX AIRFLOW (m3/h)	LIST PRICE
GR1000A	1000	4000	1800	2010.00
GR1500A	1500	4000	2700	2938.00
GR2000A	2000	4000	3600	3400.00

GUARDIAN  
GB

Guardian GB (bulkhead) series are commercial/retail air curtains designed for discreet positioning in a suspended ceiling or bulkhead above doorways where low visual impact is required.

AVAILABLE IN THREE VERSIONS:- AMBIENT (UNHEATED), ELECTRIC (HEATED) OR LPHW (HEATED)

Electric (heated) Models

MODEL	HEAT OUTPUT kW	DOOR WIDTH (mm)	MAX DOOR HEIGHT (mm)	MAX AIRFLOW (m3/h)	LIST PRICE
GB1000E	9/12	1000	4000	1800	1738.00
GB1500E	12/18	1500	4000	2700	2369.00
GB2000E	18/24	2000	4000	3600	2953.00

LPHW (heated) Models

MODEL	HEAT OUTPUT kW	DOOR WIDTH (mm)	MAX DOOR HEIGHT (mm)	MAX AIRFLOW (m3/h)	LIST PRICE
GB1000W	12.0	1000	4000	1800	1820.00
GB1500W	18.0	1500	4000	2700	2452.00
GB2000W	24.0	2000	4000	3600	3035.00

Ambient (unheated) Models

MODEL	DOOR WIDTH (mm)	MAX DOOR HEIGHT (mm)	MAX AIRFLOW (m3/h)	LIST PRICE
GB1000A	1000	4000	1800	1664.00
GB1500A	1500	4000	2700	2293.00
GB2000A	2000	4000	3600	3239.00

Options

PART NUMBER	DESCRIPTION	LIST PRICE
RJ45-CABLE-2	Plug and play cable 2m	21.32
RJ45-CABLE-10	Plug and play cable 10m	29.19
RJ45-CABLE-20	Plug and play cable 20m	44.21
RJ45-CABLE-30	Plug and play cable 30m	57.33
RJ45-CABLE-50	Plug and play cable 50m	81.69
RJ45-CABLE-100	Plug and play cable 100m	222.60
RJ12-CABLE-3	Plug and play cable 3m (ACV-ACVRD only)	23.00
RJ12-CABLE-5	Plug and play cable 5m (ACV-ACVRD only)	25.94
RJ12-CABLE-10	Plug and play cable 10m (ACV-ACVRD only)	28.35
RJ12-CABLE-15	Plug and play cable 15m (ACV-ACVRD only)	39.06
RJ12-CABLE-40	Plug and play cable 40m (ACV-ACVRD only)	72.56
RJ12-CABLE-CONNECT	Connector for 2 x RJ12 cables	19.32
RJ45-CABLE-CONNECT	Connector for 2 x RJ45 cables	19.85
SC-OS	Outside sensor	68.46
AC-DC	Door contact set	52.61
AC-TC	Honeywell timeclock	135.35



Time Clock



Door Magnet Set



Outside Sensor



RJ12 Cable



AC & ACR  
MINI

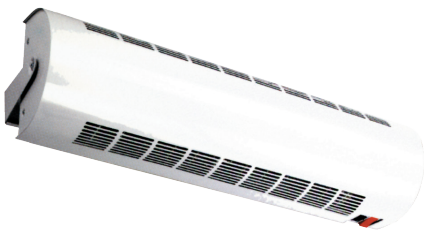
AC & ACR Mini series are commercial/retail air curtains designed for for use over doors, mounted on walls or ceiling (AC). The ACR model allows positioning in a suspended ceiling or bulhead above doorways where low visual impact is required. All models include electric heating as standard.



Recessed Model



Wireless Controller



Surface Mounted Model

Surface Mounted (Electric 1ph) - Wireless Controller Ready

MODEL	HEAT INPUT	DOOR WIDTH (mm)	MAX DOOR HEIGHT (mm)	MAX AIRFLOW (m3/h)	LIST PRICE
MINI600SE3-RX	33.0	600	1800	273	605.85
MINI800SE4-5-RX	4.5	800	2700	382	771.75
MINI1000SE6-RX	6.0	1000	3600	382	851.55
1Z-RX	Wireless controller (up to 16 units)				159.60

Recessed (Electric 1ph) - Wireless Controller Ready

MODEL	HEAT INPUT	DOOR WIDTH (mm)	MAX DOOR HEIGHT (mm)	MAX AIRFLOW (m3/h)	LIST PRICE
ACRMINI3-RX	600	600	1800	180	791.70
ACRMINI4-5-RX	800	800	2700	216	870.45
ACRMINI6-RX	1000	900	3600	432	1093.05
1Z-RX	Wireless controller (up to 16 units)				159.60

ACT SERIES

ACT series is an elctric heater that directs a downflow of warm air from overhead. Available as either a recessed or surface mounted models.

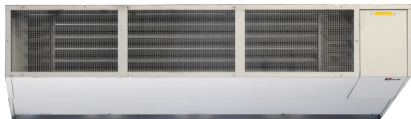


Recessed (Electric 1ph) - Wireless Controller Ready

MODEL	HEAT INPUT	DIMENSIONS (mm)	MOUNTING HEIGHTS (mm)	LIST PRICE
ACT03R-RX	33.0	220H x 600W x 600D	3000	611.10
ACT04R-RX	4.5	220H x 600W x 600D	3500	778.05
ACT06R-RX	6.0	220H x 600W x 600D	3500	871.50

Surface Mounted (Electric 1ph) - Wireless Controller Ready

MODEL	HEAT INPUT	DIMENSIONS (mm)	MOUNTING HEIGHTS (mm)	LIST PRICE
ACT03S-RX	33.0	220H x 600W x 600D	3000	791.70
ACT04S-RX	4.5	220H x 600W x 600D	3500	870.45
ACT06S-RX	6.0	220H x 600W x 600D	3500	1093.05



Single Module



Double Module

AB

AB industrial air curtains are for horizontal use above doors up to 6.0m high and available from 1.75m wide up to 6.75m. They are available in ambient (unheated), gas heated, electric heated and LPHW heated versions, with steam heated versions available on request. Control panels are available as an option.

ABX industrial air curtains are for horizontal use above doors up to 9.0m high and available from 2.25m wide up to 6.75m. They are available in ambient (unheated) and LPHW heated versions, with steam heated versions available on request. Control panels are available as an option.

Ambient (no heating)

MODEL	NO OF MODULES	MAX DOOR HEIGHT (m)	LENGTH (m)	QTY OF BRACKETS FOR VERTICAL MODELS	LIST PRICE
AB175A-2	1	6.0	1.75	2	3140.00
AB225A-2	1	6.0	2.25	2	3863.00
AB350A-2	2	6.0	3.50	3	6789.00
AB400A-2	2	6.0	4.00	3	7602.00
AB450A-2	2	6.0	4.50	3	8251.00
AB525A-2	3	6.0	5.25	3	8913.00
AB575A-2	3	6.0	5.75	4	9395.00
AB625A-2	3	6.0	6.25	4	9865.00
AB675A-2	3	6.0	6.75	4	10333.00

LPHW Heated

MODEL	NO OF MODULES	HEAT INPUT kW	MAX DOOR HEIGHT (m)	LENGTH (m)	TEMP RISE °C	LIST PRICE
AB175W-2	1	60.0	6.0	1.75	16	5301.00
AB225W-2	1	70.0	6.0	2.25	16	6193.00
AB350W-2	2	120.0	6.0	3.50	16	10134.00
AB400W-2	2	130.0	6.0	4.00	16	11044.00
AB450W-2	2	140.0	6.0	4.50	16	11788.00
AB525W-2	3	180.0	6.0	5.25	16	13367.00
AB575W-2	3	190.0	6.0	5.75	16	13947.00
AB625W-2	3	200.0	6.0	6.25	16	14511.00
AB675W-2	3	210.0	6.0	6.75	16	15077.00

Gas Heated

MODEL	NO OF MODULES	HEAT INPUT kW	MAX DOOR HEIGHT (m)	LENGTH (m)	TEMP RISE °C	LIST PRICE
AB175N-2	1	40.0	6.0	1.75	12	5379.00
AB225N-2	1	54.0	6.0	2.25	12	6206.00
AB350N-2	2	80.0	6.0	3.50	12	9560.00
AB400N-2	2	94.0	6.0	4.00	12	10609.00
AB450N-2	2	108.0	6.0	4.50	12	11174.00
AB525N-2	3	120.0	6.0	5.25	12	13890.00
AB575N-2	3	134.0	6.0	5.75	12	14455.00
AB625N-2	3	148.0	6.0	6.25	12	15062.00
AB675N-2	3	162.0	6.0	6.75	12	15627.00

Electric Heated

MODEL	NO OF MODULES	HEAT INPUT kW	MAX DOOR HEIGHT (m)	LENGTH (m)	TEMP RISE °C	LIST PRICE
AB175E-2	1	18.0	6.0	1.75	16	4276.00
AB225E-2	1	24.0	6.0	2.25	16	4966.00
AB350E-2	2	36.0	6.0	3.50	16	6837.00
AB400E-2	2	42.0	6.0	4.00	16	7639.00
AB450E-2	2	48.0	6.0	4.50	16	8502.00
AB525E-2	3	54.0	6.0	5.25	16	9961.00
AB575E-2	3	60.0	6.0	5.75	16	10140.00
AB625E-2	3	66.0	6.0	6.25	16	10953.00
AB675E-2	3	72.0	6.0	6.75	16	11119.00

AB Accessories

PART NUMBER	DESCRIPTION	LIST PRICE
CP-AB-AMBI	Ambient models controller	761.64
CP-ABGAS-SINGLE-2	Gas models controller (1 module)	1315.05
CP-ABGAS-TWIN-2	Gas models controller (2 module)	1430.22
CP-ABGAS-TRIPLE-2	Gas models controller (3 module)	1591.59
CP-ABELEC-SINGLE-18	Electric models controller AB150-175	1536.48
CP-ABELEC-SINGLE-24	Electric models controller AB225	1577.51
CP-ABELEC-TWIN-36	Electric models controller AB300-350	1951.29
CP-ABELEC-TWIN-42	Electric models controller AB400	1951.29
CP-ABELEC-TWIN-48	Electric models controller AB450	1951.29
CP-ABELEC-TRIPLE-54	Electric models controller AB525	2761.77
CP-ABLPHW-SINGLE	LPHW models controller (1 module)	1682.45
CP-ABLPHW-TWIN	LPHW models controller (2 module)	1752.85
CP-ABLPHW-TRIPLE	LPHW models controller (3 module)	2116.51
N1611	Door Switch - All Controllers	154.99
N7041	Room Thermostat - All Controllers	50.05
6500-1	¾" Flexible gas connection for AB gas models	58.85
6510	¾" BSP Gas valve for AB Gas models	20.68





Radiant & Evaporative Cooling Equipment

MODELS	
Vision, Nor-Ray-Vac, Sonning², SCR-ECO, Electric Quartz and Evaporative cooling	All models carriage charge 6% of net invoice (minimum charge £55.00, maximum charge £1200.00 per delivery)

Warm Air Unit Equipment

MODELS	SIZE	QUANTITY		
		1	2-4	5
RHeco	25 - 50	£138.00 each	£128.00 each	£120.00 each
	75 - 100	£178.00 each	£164.00 each	£154.00 each
PHOTON	10 - 50	£101.00 each	£95.00 each	£90.00 each
	70 - 120	£143.00 each	£133.00 each	£123.00 each

Destratification Fans

MODELS	DELIVERY OPTIONS	QUANTITY		
		1	2-4	5+
All Models	3-4 days	£40.00 each	£30.00 each	£25.00 each
	Next day	£71.00 each	£60.00 each	£55.00 each

Commercial Air Curtains

MODELS	DELIVERY OPTIONS	QUANTITY		
		1	2-4	5+
Guardian AC / ACR Mini, ACT	Next day	£69.00 each	£59.00 each	£54.00 each
	Next day	£43.00 each	£39.00 each	£37.00 each
All Models	Next day before 9:00 am	£97.00 each	£86.00 each	£82.00 each

Industrial Air Curtains

MODELS	NO OF MODULES	QUANTITY		
		1	2-4	5+
AB	1	£90.00 each	£74.00 each	£67.00 each
	2	£138.00 each	£117.00 each	£106.00 each
	3	£184.00 each	£154.00 each	£146.00 each

Flue

DESCRIPTION	
Flue only	All flue carriage charge 6% of net invoice (minimum charge £35.00)
Flue shipped with heater orders	Free of charge

Off-loading is the responsibility of the customer, if you require special off-loading facilities please call the UK sales office on 01384 489 700

Carriage Charge Information

- UK mainland only, other destinations P.O.A
- Hiab and other special requirements P.O.A
- All prices ex-works Brierley Hill
- All equipment sold subject to Conditions of Sale
- Transport charges are not subject to trade discount
- Carriage charges maybe subject to a fuel surcharge
- All prices based upon 3 working day delivery unless specified; next working day delivery add £35.00 per unit
- Next day deliveries based on ex-stock units being delivered next working day on orders received before 12.00 noon

# REZNOR®

## TERMS & CONDITIONS

No order shall be binding until acknowledged by Nortek Global HVAC in writing.  
The products covered by this price list are all deemed to be of standard colour, duty and specification.  
All prices are ex-works. Carriage will be charged at the rate ruling at date of despatch.  
Minimum order charge £25.00 plus p&p on small items.  
VAT will be additionally charged at the ruling rate on date of invoice.

### Payment Terms

30 days from date of invoice for approved accounts. Payment prior to despatch and early payment discounts quoted upon request.

### Returns Policy

We hope you will be completely satisfied with any product or component purchased from Nortek Global HVAC UK Ltd, but if you wish to return an item, we aim to make it as quick and convenient as possible.

### Returns Process

Please call 01384 489 700 and select from one of the options for the relevant product return.

Please have your return details ready and our trained staff will guide you through the process. On acceptance a returns material authorisation number will be given which must be included both on the packaging and returns paperwork. Upon the issuing of an RMA number, goods must be returned to us within 10 working days. We are unable to process any goods returned without an RMA number.

Not all requests to return goods will be accepted.

### Damaged in Transit

If you take delivery of a product that has been damaged in transit, the goods must be checked and any damage reported in writing within 3 working days. Claims made outside this period will not be considered. The product then requires return/collection within 10working days.

### Return of Faulty Goods

Should a fault develop with a product purchased from us within the first year of ownership, please contact our Service department with details of the fault and we will advise you how to proceed. Nortek Global HVAC UK Ltd reserves the right to either replace or repair faulty item(s). Should we deliver a replacement item we will invoice for it, crediting the faulty item upon receipt.

### Ordered Incorrectly/Incorrectly Supplied/Not Required

If an item has either been ordered incorrectly, incorrectly supplied or is not required, it can be returned within 30 days from purchase as long as it remains unused, in new condition and with all packaging and labels intact. Should Nortek Global HVAC UK Ltd incur any costs in re-working or re-packaging the returned items to a re-saleable condition, this will affect the amount of credit due.

Returned items that have been ordered incorrectly or are not required will incur a 25% restocking charge. If these items are collected, a collection charge will also apply. Heaters built to customer specification will not be eligible for return; any cancellation prior to despatch will be subject to a charge relevant to costs incurred.

### Excess Items

Nortek Global HVAC UK Ltd systems are designed using the information available to us at the time. Due to the high cost of handling and risk of damage, it is not possible for excess Nor-Ray-Vac, herringbone materials or warm air flue to be returned for credit.

### Delivery Dates

All dates quoted for delivery are approximate only and Nortek Global HVAC UK Ltd shall not be liable for the delay in delivery of goods however caused. You are advised to ensure that goods have been delivered to the required location before committing labour.

### Radiant heater stillage

For large radiant heater orders, components are delivered on stillages, which should be unloaded upon receipt and returned to the delivery vehicle. Failure to do so will result in additional charges to collect and return stillage(s).

## WARRANTY



What is covered under our standard warranty:

All heaters, controls and accessories supplied as part of a new heating system

WARRANTY	
Labour	1st Year
Parts - Excludes consumables (i.e belts, filters, fuses, Quartzglow bulbs etc)	1st and 2nd Year
Access equipment and tool hire	1st Year
Carriage cost for replacements	1st Year

Exceptions for new installations

DESCRIPTION	
DS destratification fans	1st Year (parts only)

Spare parts

WARRANTY	
Controls and accessories supplied as spares (excl consumables)	1st Year
General spare parts (excl consumables)	1st and 2nd Year
Carriage cost for replacement spares	1st Year
Labour for replacement spares	1st Year

### Standard warranty period

Date of start: From date of despatch or commissioning date (if no more than 90 days from date of despatch and conducted by a Nortek Global HVAC UK Service Engineer) Commissioning report and documentation will be required.

### Who is covered?

Who holds the warranty?: The purchasing customer account holds the warranty.  
Payment of items in warranty: Payment has to either have been settled or still be within the agreed account payment terms e.g. an account with a 30 day payment term.  
Commissioning and service of units: Proof of commissioning and annual service reports must be supplied by the customer.  
Not covered: Unauthorised modifications to equipment

### Payments

Warranty parts only request: Customers requesting parts only will be invoiced for the items and carriage. Upon return and our receipt of the faulty items and our agreement as to the warranty, a credit for the value of the invoice will be made.

Under warranty engineer site visits: We will send a 'Service and Breakdown Agreement' form, this should be completed and returned with an order for site attendance. Customers will only be charged if the call out is not covered by warranty and after full negotiation between ourselves and the customer.

Cash customers: Cash customers should pay pro-forma for the day labour rate and any parts that may be required. If the call-out is found to be covered by warranty then a credit for all items covered by the warranty will be issued.

### Standard call-out policy

Engineer call-outs: We aim to attend site within a maximum 3 working days upon receipt of full instructions and paperwork. We will however do all we can to meet any specific customer requirements.



**ALL PRICES ARE EX WORKS | E&OE**

**Nortek Global HVAC UK Limited**  
**Fens Pool Avenue | Brierley Hill | West Midlands | DY5 1QA | UK**  
**T: 01384 489 700 | F: 01384 489 707**  
**reznorsales@nortek.com | reznor.eu**

Registered in England No. 01390934 | Registered Office: Nortek Global HVAC UK Limited, Fens Pool Avenue,  
Brierley Hill, West Midlands, DY5 1QA  
Nortek Global HVAC is a registered trademark of Nortek Global HVAC Limited. Because of continuous product innovation,  
Nortek Global HVAC reserves the right to change product specification without due notice.

**REZNOR®**  
 **NORTEK**  
GLOBAL HVAC